

ADD
EXCITEMENT
WITH OUR

"CUSTOM" FUN WHEEL™



PROFESSIONAL DESIGN
FOR YEARS OF PROMOTIONS

BIG
30 INCH
WHEEL!

YOU DESIGN IT,
WE BUILD IT!

YOUR CUSTOM GRAPHICS
APPLIED TO THESE
THREE AREAS!

FEATURES

- Powder coated steel
- Real 3/4" plywood
- Flashing ropelight
- Urethane wheels
- Great clicker sound

INTERCHANGEABLE
GRAPHICS FOR
MULTIPLE EVENTS!

Dimensions:
76" high
75 lbs.
available in
4, 6, 8, 12, and 24
section wheels



FUN
INDUSTRIES INC.

627 15th Ave.
East Moline, IL 61244
Toll-free 1-800-747-1144
Local 309-755-5021
Fax 309-755-1684

©2010 Fun Industries, Inc.

WWW.FUNINDUSTRIES.COM 800-747-1144

PRIZE WHEEL ASSEMBLY INSTRUCTIONS

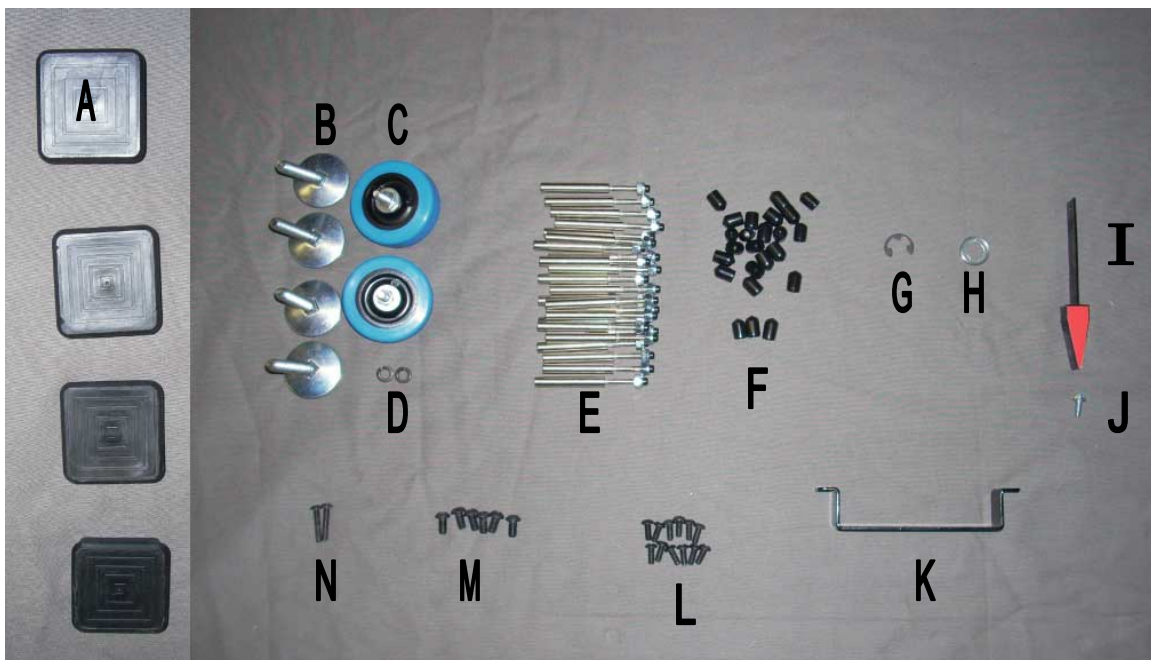
Tools Required:

Standard Screwdriver
1/8" Allen Wrench
5/32" Allen Wrench
3/8" Wrench
7/16" Wrench



HARDWARE

- A. Tube Caps (4)
- B. Levelers (4)
- C. Wheel Assemblies (2)
- D. Wheel Lock Washers (2)
- E. Wheel Pins/Nuts (24)
- F. Pin Caps (24)
- G. Wheel C Clip (1)
- H. Wheel Shim Washer (1)
- I. Clicker (3)
- J. Clicker Screw (1)
- K. Handle (1)
- L. 10-32 X 1/2" Screws (12)
- M. 1/4-20 X 1/2" Screws (6)
- N. 10-32 X 1" Screws (2)



Set the main base unit on a table. Install the 4 leg levelers (B) into the tapped holes at each corner of the base. This will be the **bottom** of the base.



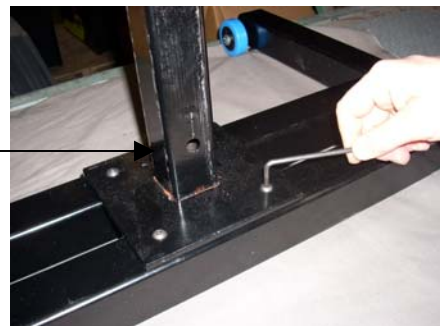
Slide a lock washer (D) over the bolt of each wheel assembly (C) and tighten the wheel bolts securely to the base. This will be the **rear** of the base.



Install a tube cap (A) at each corner. You may have to apply a little silicone to each cap for a more permanent installation.



Flip the base over on to its levelers and install the pole support to the center of the base using (4) 1/4-20 X 1/2" (M) screws. **Note that the single 1/2" hole in the support must face forward away from the wheels.** Tighten the screws securely.



Slide the main pole on to the support with the power cord at the bottom and towards the rear.



Attach the main pole to the support with (2) 1/4-20 X 1/2" (M) screws below the power cord at the rear of the pole and tighten securely.



Attach the handle to the rear of the main pole with (2) 10-32 X 1/2" (L) screws about 12 inches below the top of the pole on the rear side.



Slide the wheel shim washer (H) on to the 1/2" wheel pin on the front of the main pole.
This is the lower pin, the upper will hold the clicker later.



Install the wheel to the wheel pin by sliding the bearing hub over the pin and pushing the wheel on to the pin as far as it will go. **The bearing hub should be at the rear of the wheel.**



Secure the wheel to the pin by installing the C-clip (G) to the front side of the pin. The clip will snap into the slot cut in the pin. You may need to push the clip into place with a screwdriver.



Install the (24) clicker pins (E) to the wheel. Insert the pins through the front of the wheel and secure with a capnut on rear side. Do not over tighten.



Install the header to the front of the main pole above the wheel with (2) 10-32 X 1" (N) screws.



Connect the rope light to the plug at the rear top of the main pole.



Install the lower art plackard to the main pole with (2) 10-32 X 1/2" (L) screws.



Install the wheel art plackard to the wheel. Make sure to line the six mounting holes on the plackard with the six screw inserts in the wheel before sliding the plackard over the pins. Secure the plackard to the wheel with (6) 10-32 X 1/2" (L) screws.



Install the header plackard to the header with (2) 10-32 X 1/2" (L) screws.



Install the (24) pin caps (F) over the ends of the wheel pins.



Install the clicker (I) to the clicker shaft above the wheel with (1) 10-32 X 1" hex head screw (J). Insert the screw from the right side and tighten securely.



With your machine assembled correctly and the power cord plugged in, it should resemble the illustration at right.



**FOR ASSEMBLY ASSISTANCE CALL:
1-800-747-1144**